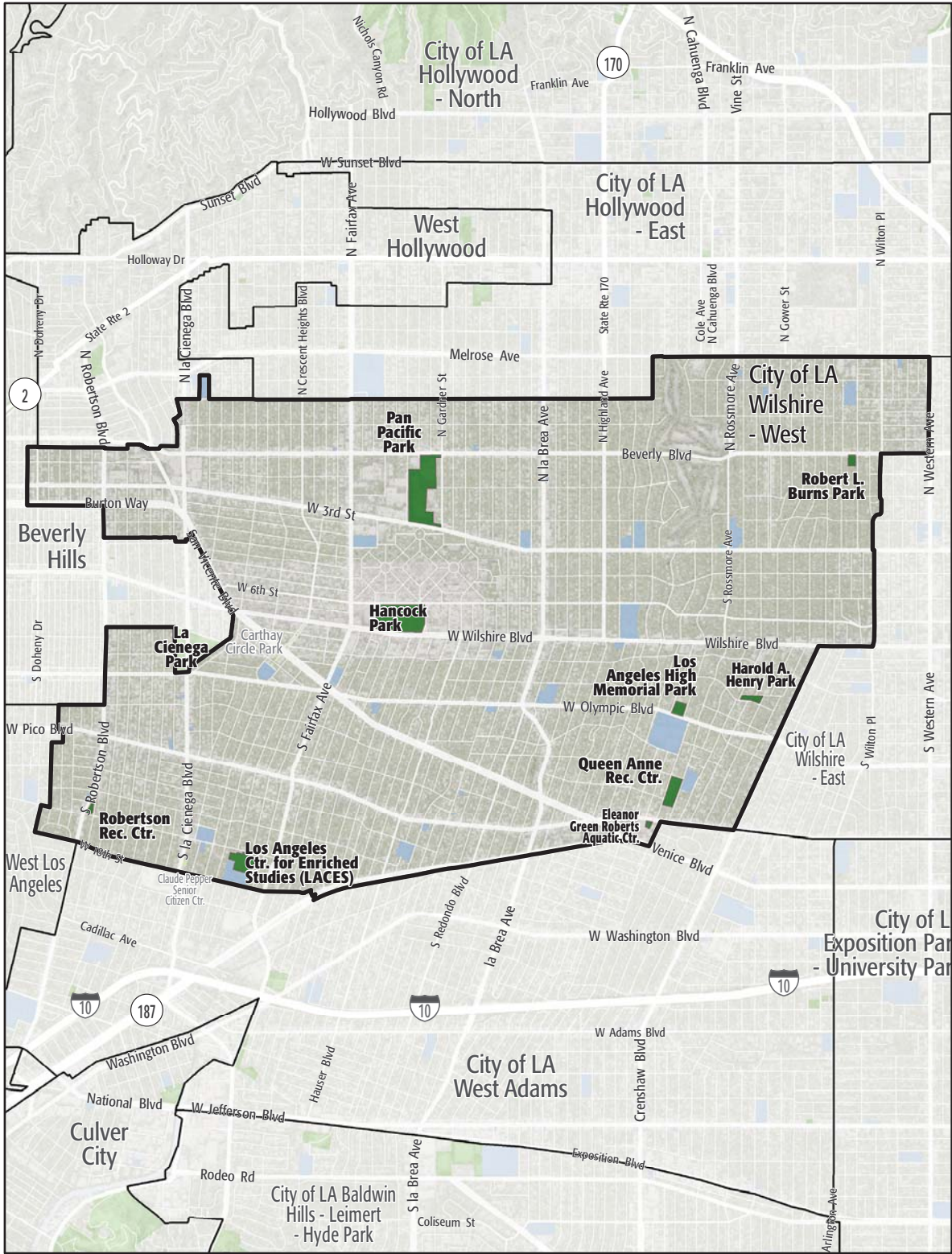


# 4. STUDY AREA BASE MAP



City of LA Wilshire - West

- Existing Park
- Existing Park Outside Study Area
- Existing School
- Other Open Space

## 6. PARK METRICS



### PARK LAND: Is there enough park land for the population?

**71** PARK ACRES  
within study area

**123,005**  
POPULATION

**0.6** PARK ACRES  
PER 1,000

The county average is 3.3 park acres per 1,000

**PARK ACCESSIBILITY:**  
Is park land located where  
everyone can access it?

**46%** of population living  
WITHIN 1/2 MILE  
of a park

The county average is 49% of the population living  
within 1/2 mile of a park

## PARK PRESSURE

How much park land is available to residents in the area around each park?

**Eleanor Green Roberts Aquatic Center  
(0.75 Acres)**

0.07 park acres per 1,000

**Harold A. Henry Park (2.08 Acres)**

0.22 park acres per 1,000

**Los Angeles High Memorial Park (2.84  
Acres)**

0.49 park acres per 1,000

**Queen Anne Rec. Center (5.64 Acres)**

0.79 park acres per 1,000

**Robertson Rec. Center (1.24 Acres)**

0.09 park acres per 1,000

**Hancock Park (23.11 Acres)**

0.94 park acres per 1,000

**Los Angeles Center for Enriched Studies  
(LACES) (7.44 Acres)**

0.54 park acres per 1,000

**Pan Pacific Park (26.19 Acres)**

1.08 park acres per 1,000

**Robert L. Burns Park (1.68 Acres)**

0.05 park acres per 1,000

# WHERE ARE PARKS MOST NEEDED?

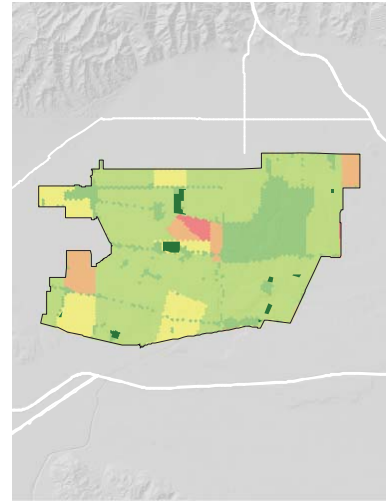
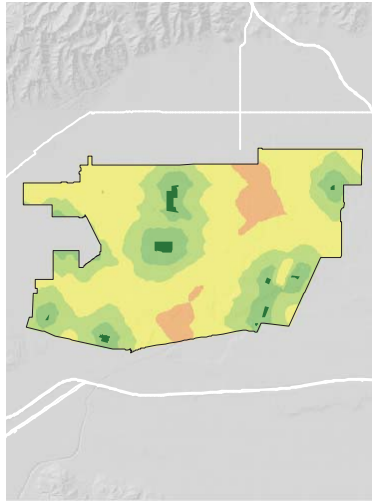
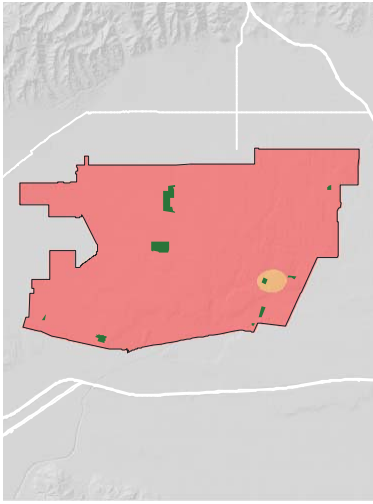
PARK ACRE NEED

+

DISTANCE TO PARKS

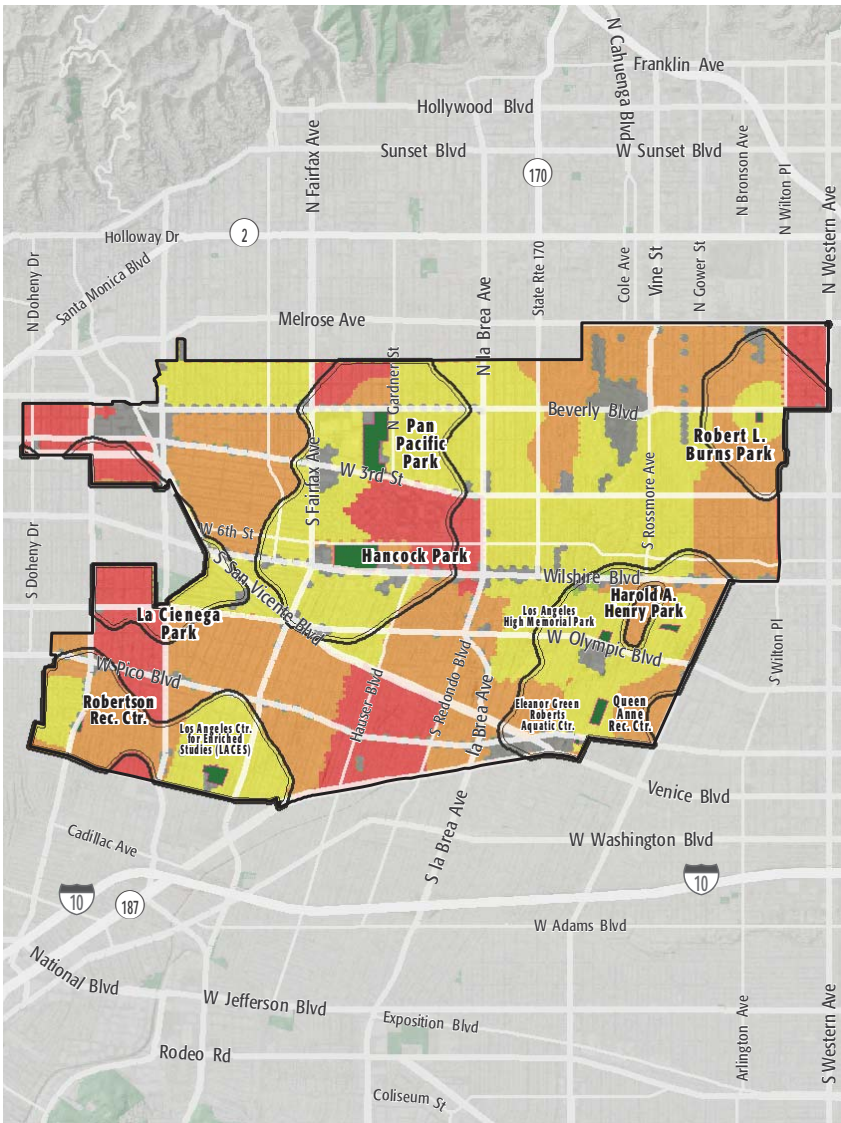
+

POPULATION DENSITY



= PARK NEED

\*Calculated using the following weighting: (20% x Park Acre Need) + (20% x Distance to Parks) + (60% x Population Density)



## PARK NEED CATEGORY

- Very High
- High
- Moderate
- Low
- Very Low
- No Population
- Area within 1/2 mile walk of a park

## HOW MANY PEOPLE NEED PARKS?

